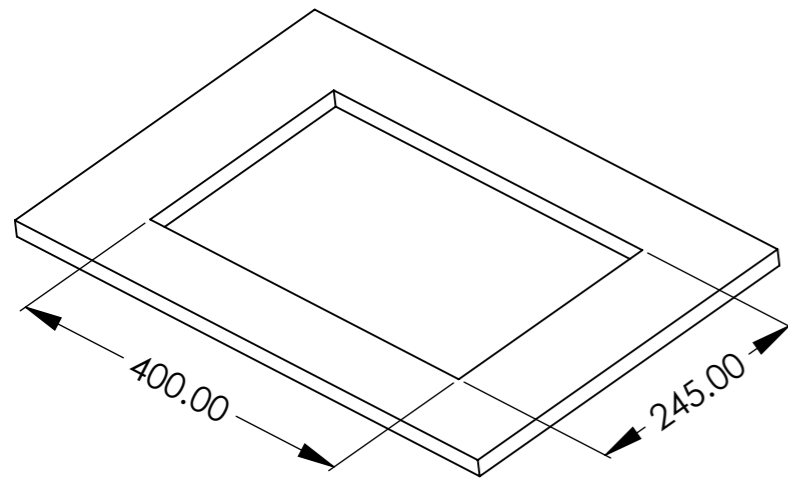


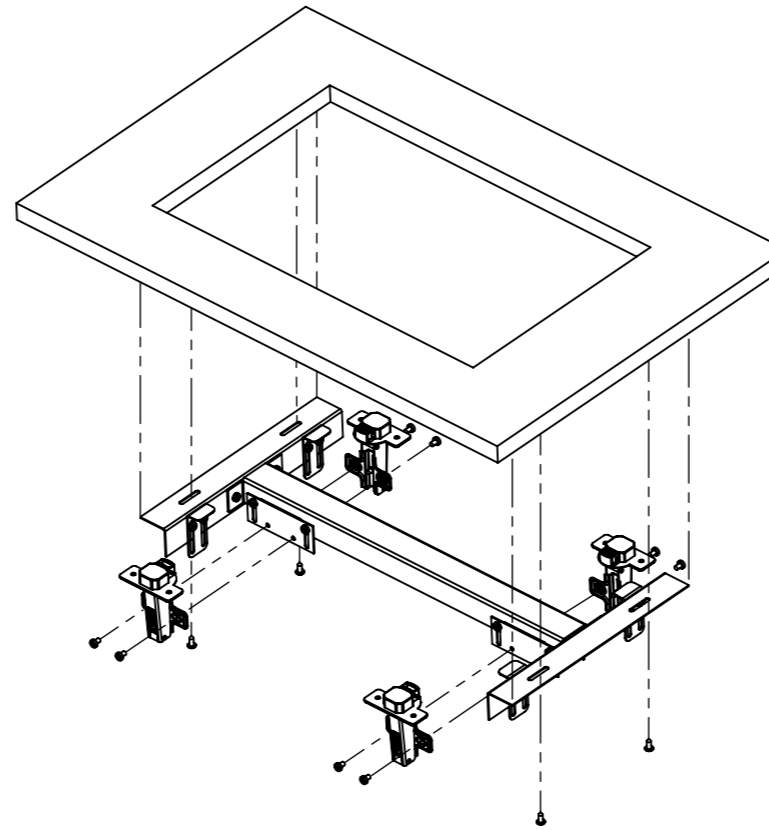
## 1. Desk Top Cut Out Size



### Note:

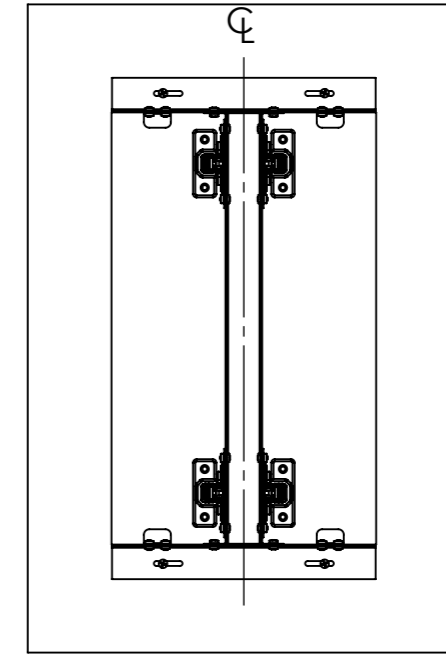
- Size provided is of a **FINISHED** cut out size
- Material removed from cut out to be used for lids
- If veneered timber is used, make allowance for the thickness of veneer when sizing the cut out

## 2. Fixing of Lid Channel Assembly



- Assemble hinges to the hinge plates
- Note:** Hinges are not supplied with this assembly

## 3.

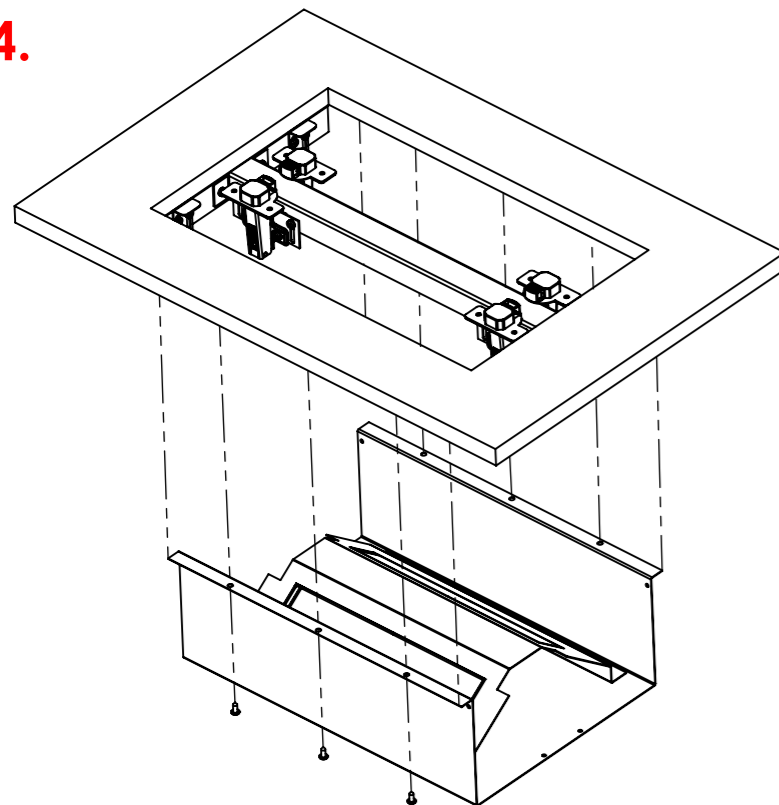


### Underside View

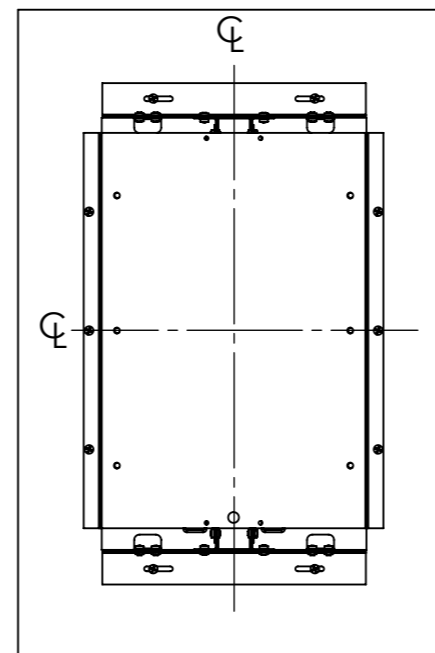
- Centre 'Lid Channel Assembly' with the cut out in the desk surface
- Fasten 'Lid Channel Assembly' with appropriate length screws (4x screws required)

## Assemble Chassis with Back Box

## 4.



## 5.

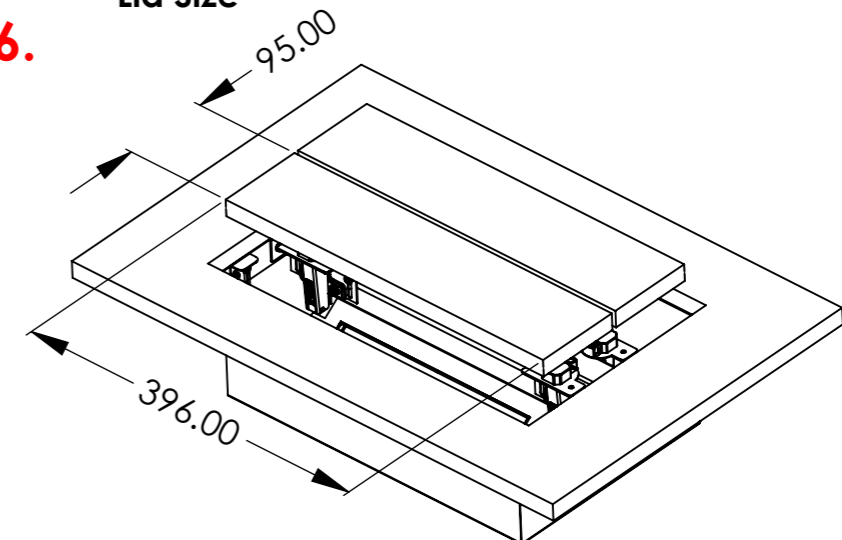


### Underside View

- Centre Back Box Assembly with the cut out in the desk surface
- Fasten 'Back Box Assembly' with appropriate length screws (6x screws required)

## 6.

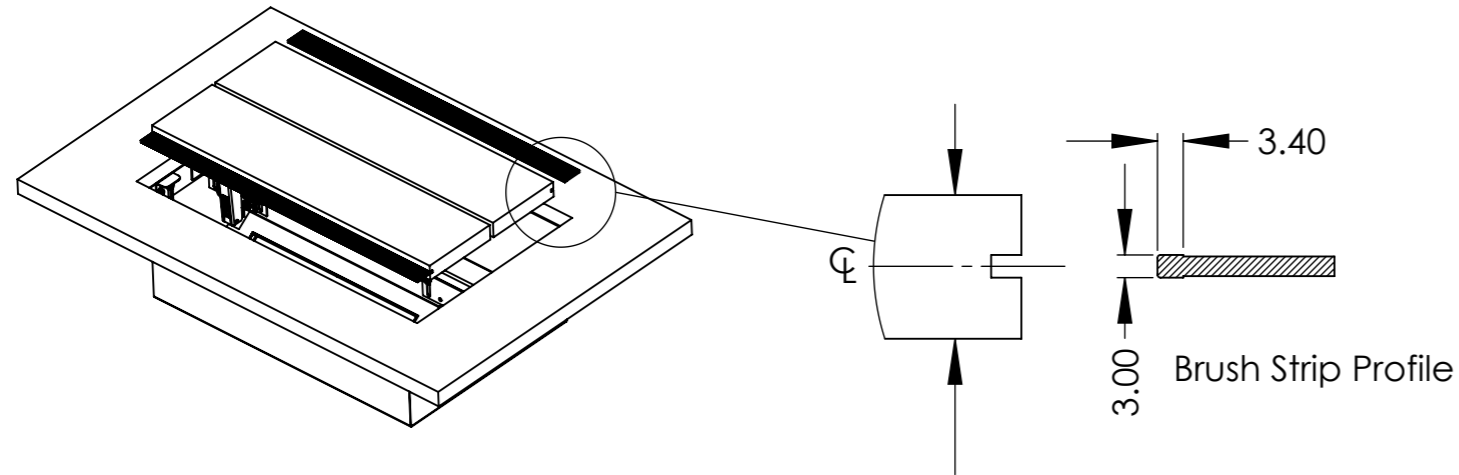
### Lid Size



### Note:

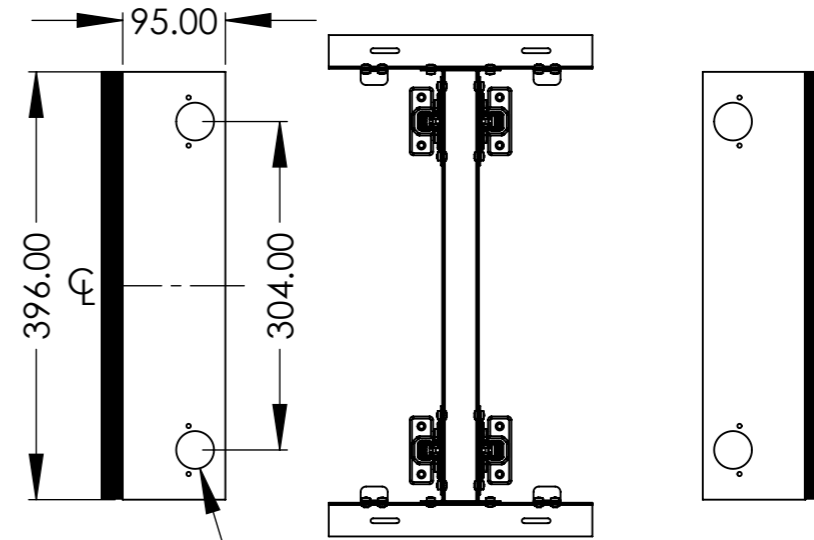
- Recommended Lid Size 396mm x 95mm (x2 Lids)
- If veneered timber is used, ensure the grain of the lid matches the grain of the desk surface

**7. Brush Strip**



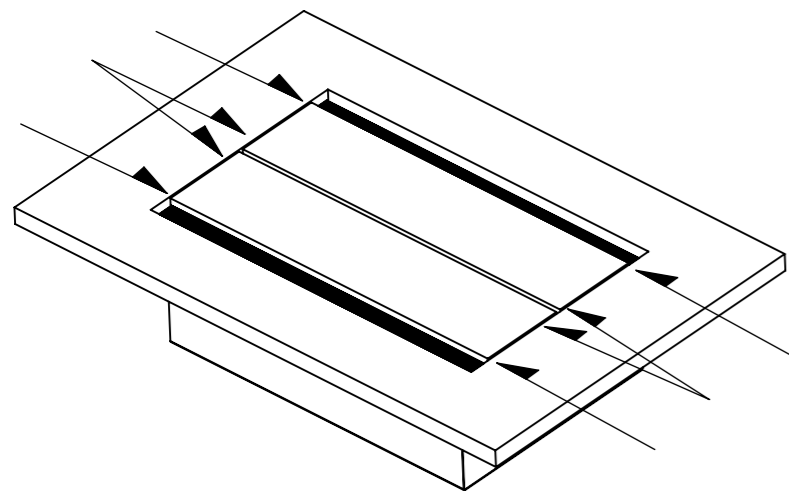
Machine slot in the centre of the lid.  
Note: Thickness of lid will vary

**8. Lid Hinge Assembly**



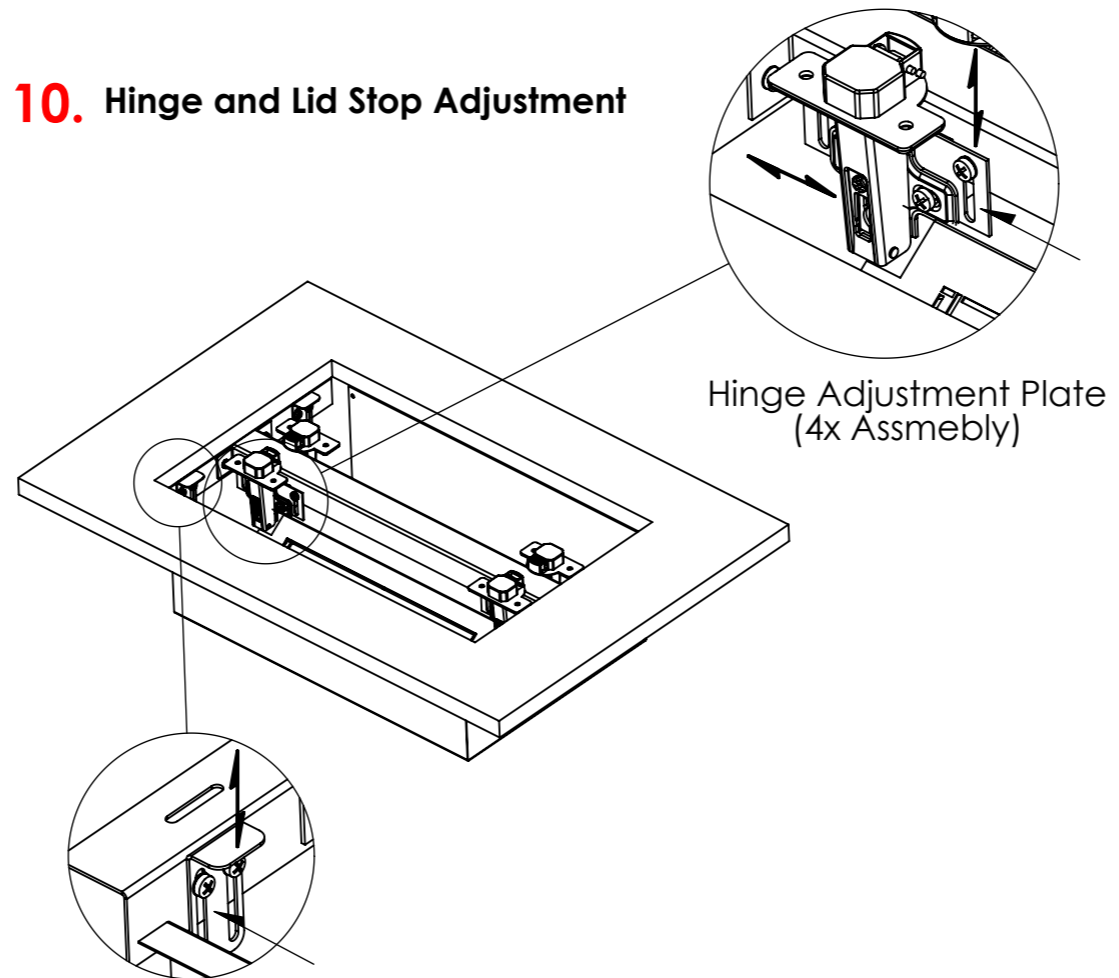
**Underside View**  
Drill holes in accordance with hinge manufacturers specifications and hole spacing dimensions

**9. Lid Adjustment**



Ensure all edges of lid are flush with the surface of the desk

**10. Hinge and Lid Stop Adjustment**



Hinge Adjustment Plate  
(4x Assembly)

Lid Stop Adjustment  
(4x Assembly)

Note: Desk surface removed for clarity

**Completed Assembly**

