

agile working

what should be considered in an agile space?

design guide for people-centric agile working strategy.



// THE FUTURE OF WORK

Office footfall is increasing as people have been returning to the office. 77% of office workers are now spending some or all of their working day back in the office.

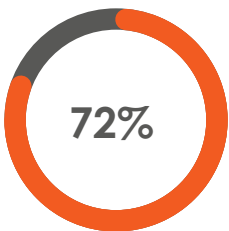
The transition back to the office coupled with changing workspace expectations presents new opportunities when considering office design giving us a real opportunity to future proof the working space and address three key questions:

- How much office space do we need
- What does the new office space look like
- How do we maximise productivity from our office space

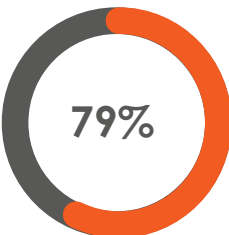
Every business has its own unique set of working arrangements, there is no one size fits all model. Universally it is becoming clear that the three main reasons workers come into the office are for meetings, collaborative work and socialisation.

Social spaces and flexibility were prioritised in a recently completed large project by Hassell Studios to support a structural business change and a post-covid demand for more adaptable and fluid workspaces. ([Hassell Studios, 2022](#)). (1)

// THE STATS



of workers who can work remotely say they prefer a mixture of in-person and remote working. ^[2]



of workers aspire to be back in the office at least once a week. ^[3]

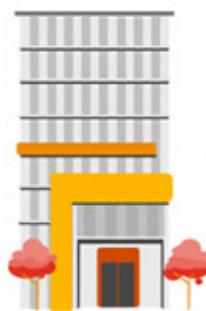


“the tethers that tied us to a desk are being cut by increasingly mobile technologies...”

Employees prefer to work in a space or place that best fits the task at hand.



HOME



OFFICE

Desk Booth Foyer



THIRD SPACE

Co-Working Space
Café Park Library

agile workspaces

empower employees

// productivity

often thrives in an agile office as people can choose the best place to work for the task at hand. Agile workspaces are more about performance and quality and less about where tasks are undertaken.

// maximises space

being able to move commercial furniture around to suit the end users needs maximises the functionality of the space available. Optimising the workspace for the end user maximises productivity.

// attracts talent

surveys show that workers are prioritising agile opportunities when looking for new roles. Businesses that compete effectively for global and local talent effectively accommodate these needs.

// facilitates better communication

agile spaces ensure teams have the correct tools to support group work - such as work booths, whiteboards and presentation screens. Designing dedicated work hubs allows collaborative teams to work alongside independent employees with minimal distractions.

increase^[4] in productivity at companies that work with agile methods

An agile workspace allows employees to choose the type of work spaces that are suited to their working style.

This can lead to greater satisfaction levels as employees feel empowered and valued. For a company, this can translate to improved productivity and improved employee retention levels

what to include

in an agile office





include spaces for individual work

After the quiet of working from home, workers may find returning to the office noisy and distracting. However, the office can adapt to support individual focused work too.

Noise can be reduced by introducing focus booths & smaller working hubs into the space. Worker's ability to focus on tasks improves significantly when noise is reduced.

focus zones



Open office areas

In an agile office some of our workload will still be admin-based. For tasks such as emails, it makes sense to complete these at workstations. The office may include hot desks or an assigned seating arrangement.

Single long tables can assist in breaking down barriers between employees. Sit to stand and mobile workstations promote agility with flexible desk configurability.

Include touch down zones for employees who work mostly away from the office. A few workstations may be all that is needed for the mobile team.

desk space



design spaces that bring people together

Agile spaces make collaboration simple. Acoustic shielding dampens sound so that teams can communicate without distracting others in the office. As virtual communication will take place, these zones should include audio & video support.

There may be a range of collaborative spaces: small and large. Smaller spaces tend to be more open - like a booth. Larger collaborative areas may be in a room. Both should offer access to hardware such as screens and whiteboards to support workers.

collaborative zones



a space to form tight knit bonds within teams

Where teams can eat, relax and have ad-hoc brainstorm sessions fostering creativity outside the formality of the boardroom.

Companies that include social areas see stronger team commitment and an increase in productivity and organisational health.

socialising zones



untether and work effectivity with ANIMATE

An agile office requires an agile power solution. No matter where in the office employees work they still need access to power to keep their devices charged.

ANIMATE is an integrated click and connect laptop and mobile charging system powered by QIKPAC batteries.

Furniture fitted with ANIMATE modules can be placed to suit the 'end users' needs rather than where there is fixed power.

ANIMATE supports the transition to agile working with a flexible power solution for every scenario.

agile power



ANIMATE scenarios for an agile workspace

ANIMATE commercial furniture with QIKPAC and move it around to suit the "end users needs" not the available power sockets.

ANIMATE desks and arrange in groups or move them to quieter areas for individual working requirements.

Leave the office with QIKPAC in a handy QIKPAC CARRY case, a portable solution designed to power devices for up to 28 hours from a single charge.

Contact us to find out how simple it is to incorporate battery power into your project - sales@oeelsafe.com.au

agile furniture

references

1. Hassell Studio, (2022) Our first workplace designed for a post covid workforce who are favouring a more adaptable and fluid workplace

<https://www.hassellstudio.com/news-event/our-first-workplace-designed-during-the-pandemic-for-a-post-covid-workforce>

2. PWC - Hopes and Fears 2021

<https://www.pwc.com/gx/en/issues/upskilling/hopes-and-fears.html>

3. Be Summit, Shaping the Future of Work.

<https://besummit.com.au/policy-trends/shaping-the-future-of-work-the-office-ecosystem-and-hybrid-work/>

4. Australian National University (2020)

<https://www.anu.edu.au/alumni/news/understanding-the-agile-work-environment>

let's unlock an agile workplace!

find out how OE can help you design
the ultimate agile work environment:

 www.oelsafe.com.au/animate

 1300 357 233