

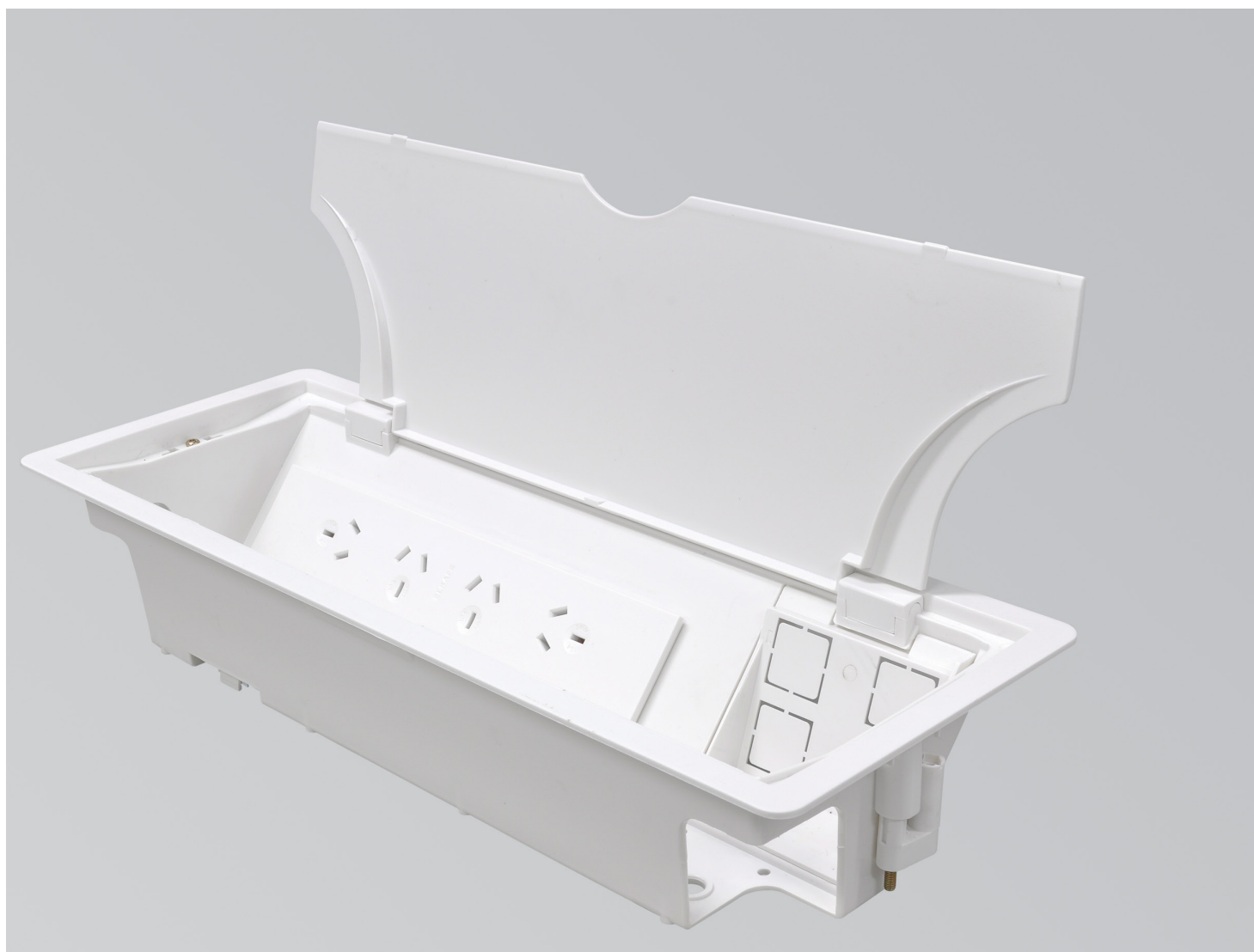


GENIE provides an excellent solution for in-desk power and data requirements. The one size flush mounted GENIE can accommodate up to four power sockets along with several different combinations of data and AV. Data and AV components can be fitted post installation.

GENIE is quick and easy to install from above the surface by one person negating the need to work under the desk. The hinged lid has a scalloped recess at each end to allow easy and free access for power and data cables.

GENIE is fitted using the OE QikFIT, QD or PB series providing any combination of power, data and AV required. TUF HP USB C laptop charging option also available.

Standard colour is white. Other colours are available subject to minimum order quantities.

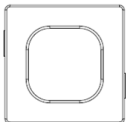


## COMMON COMPONENTS



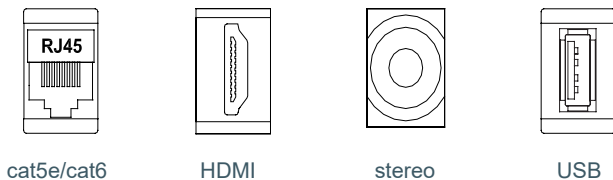
\* Wide range of Data / AV cutouts and couplers available on request  
QikFIT Modules available as standard in Black or White

## DATA/AV BEZEL

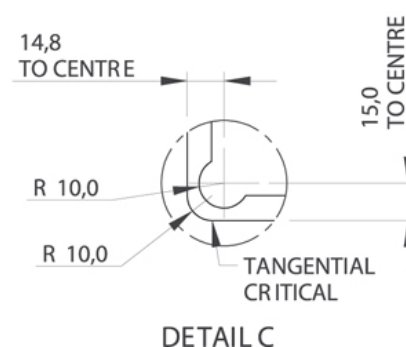
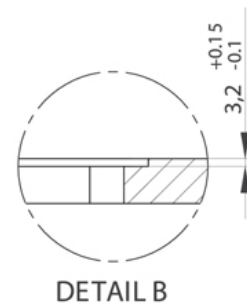
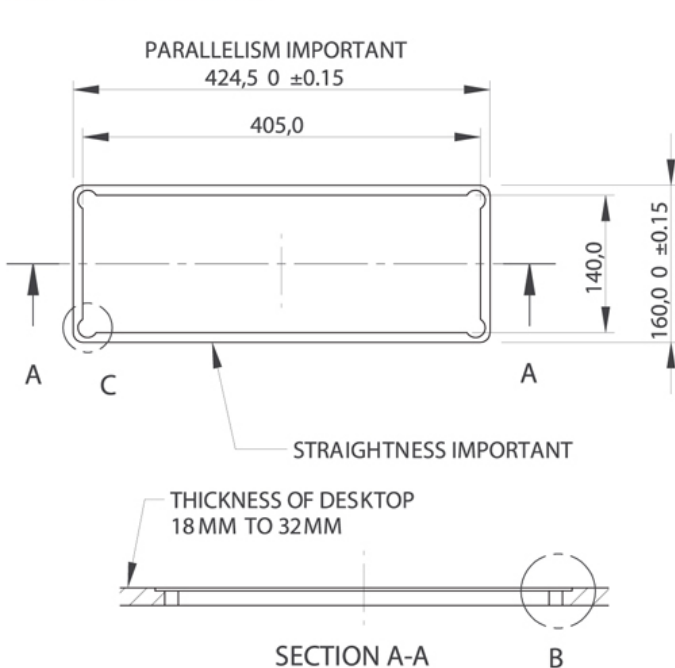


bezel for snipouts

## DATA/AV COMPONENTS



## CUT-OUT INSTRUCTIONS



## FEATURES

**GENIE can be fitted from above** by one person with no underdesk fitting required

**Colour:** White. Other colours are available subject to minimum order quantities.

### Power and Data configurations available

- Power or Data only
- Power and USB Fast Charging
- Combined (Power, USB Fast Charging & Data/AV)
- TUF-HP (high powered) USB Laptop Charging option
- International Sockets available on request

**Reversible USB A Port:** Accepts cable both ways.

**Insulation:** QikFIT modules with reinforced insulation.

**Testing:** 100% testing – continuity, polarity, insulation & earth.

### Soft Wiring (power)

Power wired to Wieland GST connector allows starter cables to be changed to suit requirements, especially useful during moves and changes (CHURN)

### Soft Wired Data

As well as soft-wired power, GENIE can accommodate soft wired data. Using our in-line couplers, data cables can be changed “on-site” to accommodate changes in length often associated with churn. Simple on-site installation of pre-terminated data where branded connectivity required.