

# qikFIT data / AV

OE Elsafe offer a wide range of QikFIT Data and AV cutouts and couplers designed to fit OE Elsafe power rails, table boxes, floor and ceiling boxes. All QikFIT modules simply click into the OE PRODIGY cable basket for fast installation. QikFIT can also be fitted directly into screens up to 3mm thick or when using a Thick Panel Frame can be installed into panels from 3mm to 14mm thick.

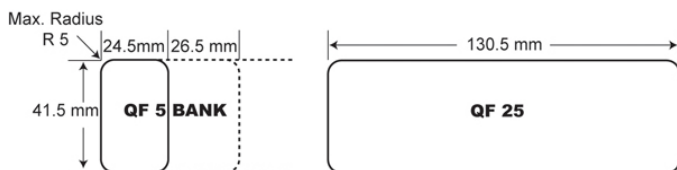
Once installed, QF5 tiles can be removed from the front to allow for easy replacement when reconfiguring or to allow access to the back of the tile for termination.

Data / AV tiles can be supplied with fully tested pre-terminated cables or alternatively the tiles can be provided with cutouts to accommodate all brands of data jacks including Clipsal style (referred to as AUNZ data jacks) and Keystone style data jacks.

OE Elsafe also offer QikFIT Data panels designed to fit industry standard cutouts. These panels are available pre moulded to accept 4 AUNZ data jacks without the need for an adaptor bezel or alternatively panels are available with two angle data bezels to allow for shallow cavity situations preventing tight bend radii.

Blank tiles are also available to fit any cutout size or alternatively can be used for blanking purposes. Please contact our friendly OE Elsafe team for any other data requirements.

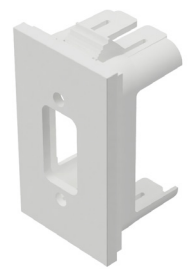
## Cutout Dimension



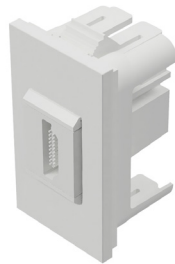
QF5 Blank



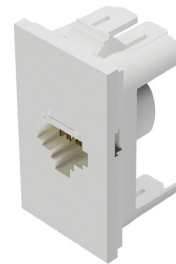
QF5 DATA Cutout



QF5 VGA Cutout



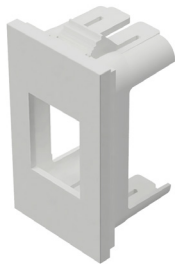
QF5 HDMI Coupler



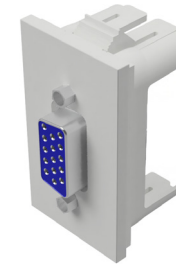
QF5 RJ45 Coupler



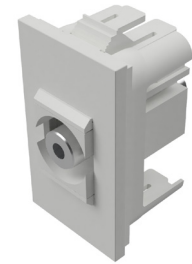
QF5 CAT Coupler



QF5 Keystone Cutout



QF5 VGA Coupler



QF5 Stereo Coupler

Please enquire for other data/AV options



4 Data Cutout



Angled Data AUNZ

Keystone style adaptors are available in eight different colours for use with Keystone Data tiles. The colours allow for easy data cable identification.



The Keystone style adaptors are designed to allow the face of the data jack to sit flush in the keystone cutout for a streamlined finish.