

# TUF-R HP (72W)



TUF-R HP (72W) A+C USB device charging splits the power system, enabling a sleek, slim USB charging solution above the desk, with the power supply discreetly hidden under the desk, inside cabinetry, or clipped neatly into a Prodigy cable basket.

TUF-R HP provides laptop charging through the Type C port while maintaining intelligent device recognition (IDR) on the Type A port.

TUF-R HP features include;-

- Split system solution for slim rails providing a powerful yet compact, sleek desktop solution.
- Patented unit replaceability of TUF-R modules
- Intelligent device recognition (IDR) for optimal fast charging on Type A port
- Unique reversible Type A and Type C solution
- Power delivery (PD) specification, providing optimal charging for the latest Type C phones.



PIP3 with TUF-R HP Canister

PACE Power Rail with TUF-R HP QF5 Tile



## FEATURES:

- TUF-R HP charges laptops, smartphones, and tablets
- TUF modules are upgradeable or replaceable extending the life of the product
- All TUF A+C modules include OE's unique reversible type A-Port
- Developed by the OE Group, incorporating advanced USB technologies

# TUF-R HP TECHNICAL

## KEY SPECIFICATIONS - TUF-R HP

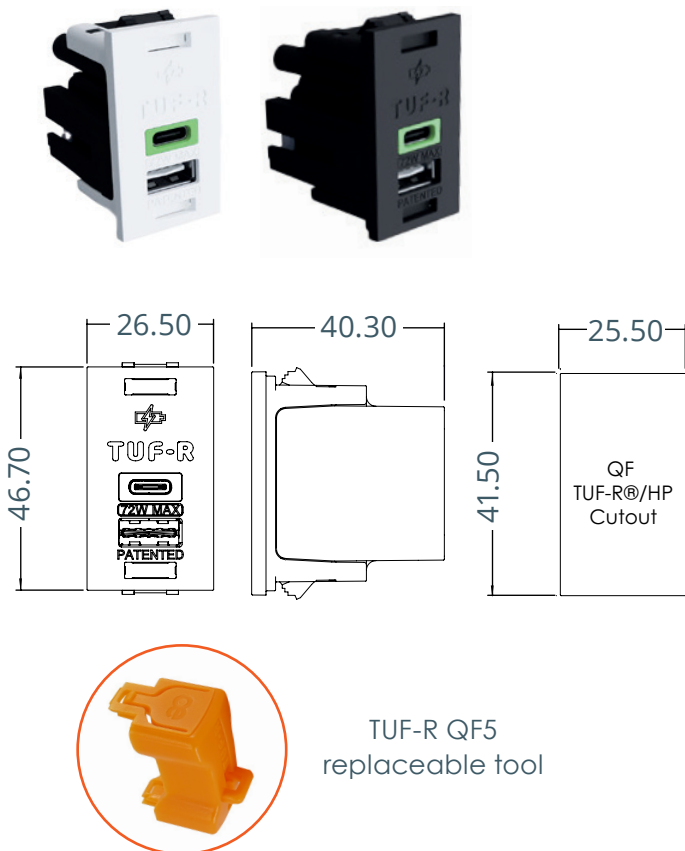
USB Charging Outlets	1 x Type A Female 1 x Type C Female
Input Connection	1x GST08 Male
Output Voltages and Currents	<b>TYPE C:</b> MAX 60W 20V/3A, 15V/3A, 9V/3A, 5V/3A (PD3.0) QC 2/3.0 5V/3A, 9V/2A, 12V/1.5A  <b>TYPE A:</b> MAX 12W 5V / 2.4A IDR BC1.2, Apple 12W Mode, Samsung Fast Charge
Input Voltage	24 – 30V DC
Rated Total Output Power	72 W MAX

TUF modules are safe and designed for public spaces. No data transfer is possible as TUF has no external data connections or the ability to store enough code to put malware on a device.

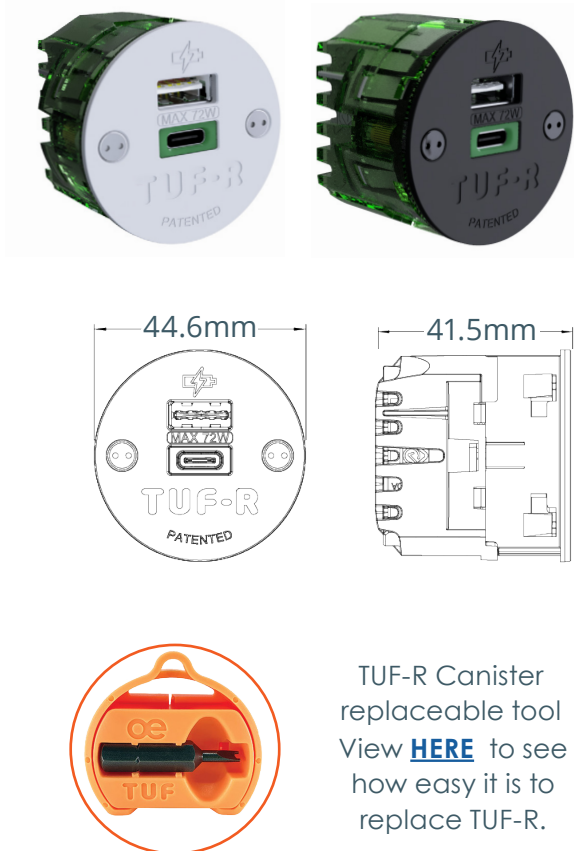
USB Connector	Min. Insertions – 10,000 for Type A, 10,000 for Type C
Over Current Protection	Yes, Digital Control at 3.3A - Auto Reset with LED Flash
Short Circuit Protection	Yes, Digital Control at 3.3A - Auto Reset
Over Temperature Protection	Auto Power Reduction to PD 45W Mode 20V/2.25A, 15V/3A, 9V/3A, 5V/3A
Rated Operating Temperature	0° TO 25°C
Standards	IEC 62368-1 : 2018 (safety) EN61204 : 2018 (EMC)
Field Replaceable	Yes when in 42mm Canister and QF5 solutions

TUF-R and QF30 PSU modules are designed and intended for commercial use.

### TUF-R HP QF5 DIMENSIONS\*



### TUF-R HP CANISTER DIMENSIONS\*



\*TUF-R modules must be paired with a PSU (power supply) module and a GST08 cable.

# TUF-R CC (150W)



TUF-R HP (150W) C+C USB dual laptop charging is designed to be powered by OE's award-winning QIKPAC battery solution.

TUF-R HP can also be powered by OE's power supply unit (PSU), enabling 63w of power, suitable for a single laptop and mobile phone.

Both QIKPAC and OE's PSU units can be discreetly installed beneath the surface, inside cabinetry, or clipped into an OE PRODIGY cable basket.

TUF-R CC features include:

- Patented unit replaceability of TUF-R modules.
- Compatible with QIKPAC CARRY to deliver the full 150W of laptop charging power.
- Fits most OE Elsafe products.
- Powered via QIKPAC battery, DC, or AC mains.



animate qikpac carry



tuf-r modules



#### FEATURES:

- TUF-R HP CC dual laptop charger is designed to be powered by OE's QIKPAC battery (DC) to deliver the full 150W of power.
- TUF-R HP CC will deliver 63W when powered by a PSU (AC) mains.
- TUF modules are replaceable extending the life of the product.
- Developed by OE, incorporating advanced USB technologies.

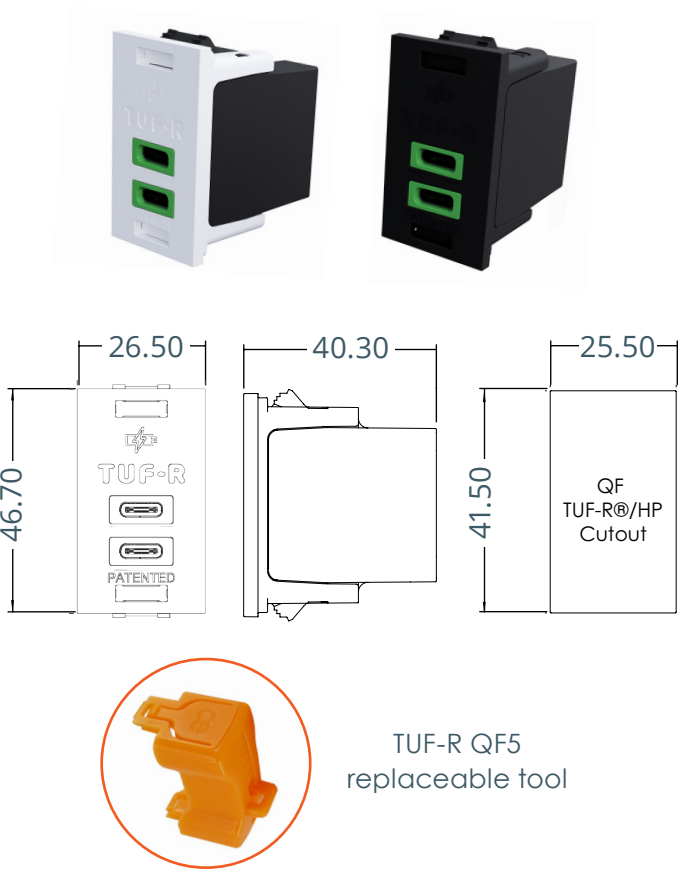
# TUF-R CC TECHNICAL

## KEY SPECIFICATIONS - TUF-R CC

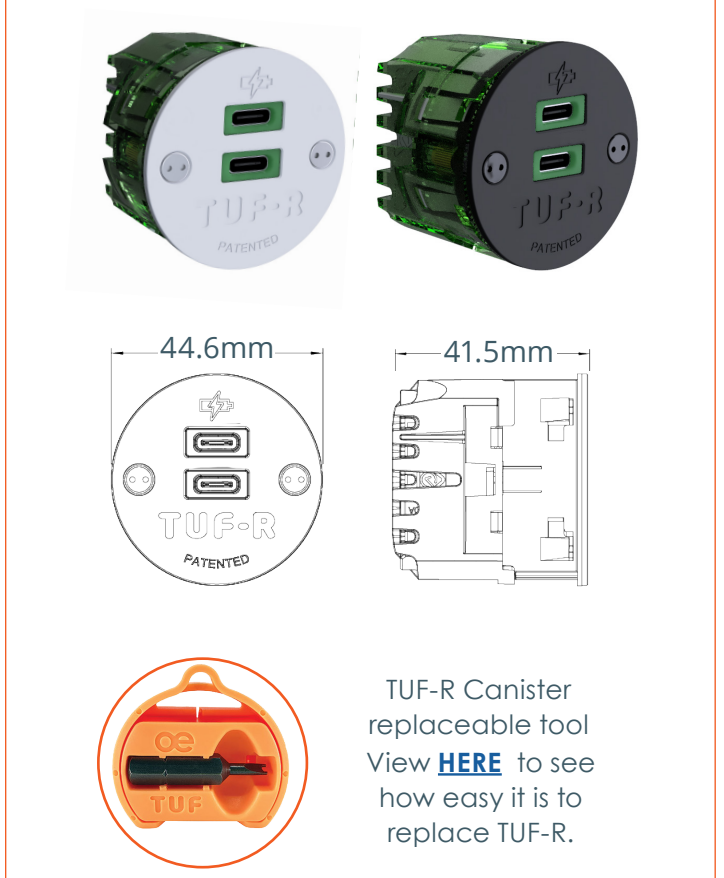
USB Charging Outlets	2 x Type C Female
Input Connection	1x GST08 Male
Output Voltages & Currents Single Port (Either USB-C port)	<b>NORMAL MODE</b> <b>USB C1 OR C2: MAX 100W</b> 5V/5A, 9V/5A, 12V/5A, 15V/5A, 20V/5A <b>REDUCED POWER MODE*</b> <b>USB C1 + C2: MAX 63W</b> 5V/2.4A, 9V/3A, 12V/3A, 15V/3A, 20V/3.15A
Output Voltages & Currents Two Ports (Both USB C ports simultaneously)	<b>NORMAL MODE</b> <b>USB C1 + C2: (75W + 75W)</b> 75W: 5V/3A, 9V/3A, 12V/3A, 15V/3A, 20V/3.75A. <b>REDUCED POWER MODE*</b> <b>USB C1 + C2 (45W+18W OR 18W+45W)</b> 45W: 5V/2.4A, 9V/2.5A, 12V/2.5A, 15V/2.4A, 20V/2.25A. 18W: 5V/2.4A, 9V/2A, 12V/1.5A, 15V/1.2A, 20V/0.9A.
Input Voltage	24 – 30V 6.0A MAX

USB Connector	Min. Insertions – 10,000 for Type A, 10,000 for Type C
Over Current Protection	Yes, Digital Control at 3.3A - Auto Reset with LED Flash
Short Circuit Protection	Yes, Digital Control at 3.3A - Auto Reset
Over Temperature Protection	Auto Power Reduction to PD 45W Mode 20V/2.25A, 15V/3A, 9V/3A, 5V/3A
Rated Operating Temperature	0° TO 35°C
Certifications - Safety	IEC 62368-1:2018 UL62368-1 cTUVus
Certifications - EMC	EN61204 : 2018 FCC 47 CFR PART15 SUBPART B
Certifications - ROHS	EU2011/65/EU AS AMENDED BY (EU) 2015/863
LED Indicator	Power On: Green Over-current: Fast Green Flash Power Input Below 23V: Slow Green Flash

### TUF-R CC QF5 DIMENSIONS\*

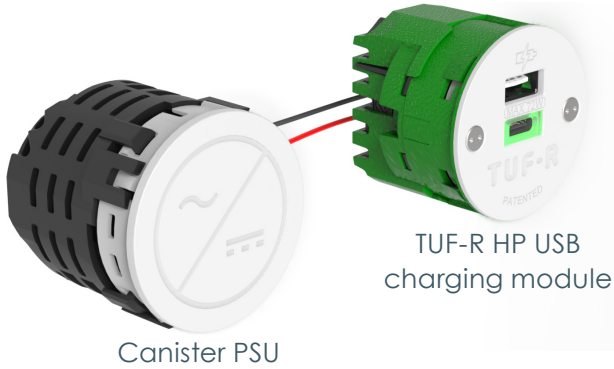


### TUF-R CC CANISTER DIMENSIONS\*



\*TUF-R HP modules must be paired with a PSU (power supply) module and a GST08 cable.

# Canister PSU



## Specifications

Input Connectors	1x Male Mains GST18/3 input 20A Installation Coupler
Output Connectors	1x Female Mains GST18/3 output 20A Installation Coupler 1x Female 30V DC GST08 output
Input Voltage	100-230 VAC 50-60HZ
Rated Input Current	1.7A
Input Power	MAX 70 Watts
Standby Power	0.1W / 0.27W WITH TUF HP
Output Voltage	30V
Output Current Rated	2.34A
Over Current Protection	Yes
Short Circuit Protection	Yes
Over Temperature Protection	Yes
Status Indication	Yes Blue LED
Standards	UL/IEC 62368-1 : 2014 EN IEC 61204 : 2018 FCC PART 15(B)

Canister PSU is a dedicated 70W AC/DC power supply designed to power the OE Elsafe high power TUF-R HP canister USB charging module.

Canister PSU will fit most OE products fitting into a standard socket. Canister PSU also fits into the PLUTO 80mm grommet base, removing the need for an external DC power supply for TUF HP.

Canister PSU's are available with either "AC/DC" logo or blank polycarbonate fascias in white, black or grey to match your chosen power socket colour.

Canister PSU meets the latest US level VI and EU eco-design energy efficiency requirements.

Construction: Made from high strength fire retardant polycarbonate

Colours: Black, grey or white front fascia, black body

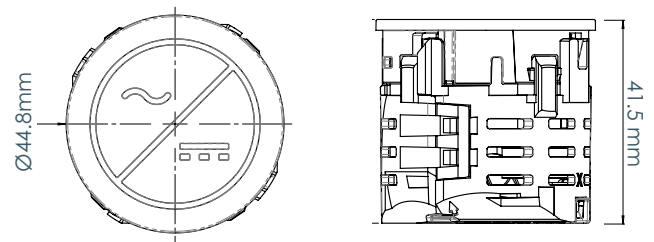
Quality & Testing: All Canister PSU modules are manufactured using ISO9001 quality controlled components and practices and are 100% tested before dispatch.



PLUTO is available with a canister PSU fitted neatly in its base to provide extra power options above surface.



## CANISTER PSU DIMENSIONS



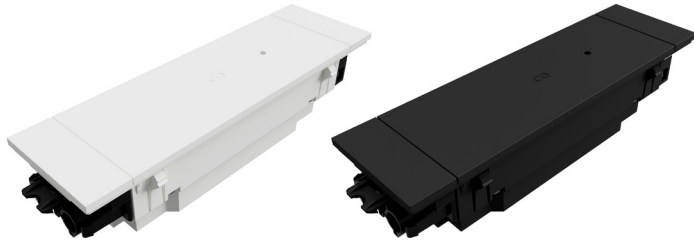
Blank Fascia

AC/DC Fascia



Custom printed fascia available on request

# QF30 PSU



QF30 PSU is a dedicated 75W AC/DC power supply designed to power the OE Elsafe high power TUF HP QF5 tile or canister USB charging modules.

QF30 PSU will provide power for the above surface modules while being discreetly installed below surface, inside cabinetry or neatly clipped into the OE Prodigy cable Basket.

QF30 PSU meets the latest US level VI and EU eco-design energy efficiency requirements.

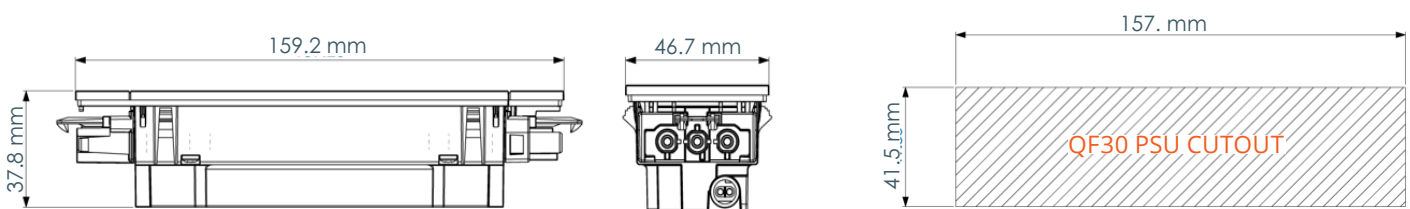
Construction: Made from high strength fire retardant polycarbonate

Colours: Black or white

Quality & Testing: All QF30 PSU modules are manufactured using ISO9001 quality controlled components and practices and are 100% tested before dispatch.

Specifications	
Input Connectors	1x Male Mains GST18/3 input 20A Installation Coupler
Output Connectors	1x Female Mains GST18/3 output 20A Installation Coupler 1x Female 30V DC GST08 output
Input Voltage	100-230 VAC 50-60HZ
Rated Input Current	1.7A
Input Power	MAX 75 Watts
Standby Power	0.21W
Output Voltage	30V
Output Current Rated	2.34A
Over Current Protection	Yes
Short Circuit Protection	Yes
Over Temperature Protection	Yes
Status Indication	Yes Blue LED
Standards	UL/IEC 62368-1 : 2018 (safety) & EN61204 : 2018 (EMC)

## QF30 PSU DIMENSIONS



# TUF-R REPLACE



TUF-R and TUF-R HP are quick and simple to replace without the need for an electrician or turning off the power. The unique and patented benefit of being replaceable makes TUF-R perfect for areas of high usage.

**CLICK** to see how quick and easy TUF-R is to replace.

Upgrading or replacing the TUF-R module and not the whole product saves time, money, and significantly reduces waste.

Being replaceable also allows TUF-R to be upgraded in the future to incorporate the latest technologies.



TUF replacing tool.



Insert the 'snake eye' bit into the tool as shown.



Use the tool to unscrew the 'snake eye' screws.



Lift off the TUF fascia



Insert the second part of the TUF replacing tool into the TUF as shown, until a click is heard.



Pull the TUF cartridge out from the unit.



Unwrap and insert the new TUF cartridge, paying close attention to the orientation of the cartridge to the blue housing.



Push the cartridge into the blue housing until a click is heard.



Place the TUF fascia back into position.



Using the TUF replacing tool and 'snake eye' bit, screw the snake eye screws back into place