

TUF-R



TUF-R is an eco-award-winning USB charging module that fits most OE Elsafe power units. TUF-R will fast charge two mobile phones, tablets, or other small electronic devices simultaneously.

TUF-R 42mm canisters are available with A+C (25W) or C+C (30W) USB ports.

TUF-R USB modules are simple to replace without the need to turn off the power or call an electrician. The unique and patented benefit of being replaceable makes TUF-R modules perfect for areas of high traffic, such as public spaces, education, and hospitality, where if damaged, TUF-R can quickly be replaced. Replacing or upgrading TUF-R modules and not the whole product saves time, resources, and reduces waste.

[CLICK](#) to see how easy TUF-R modules are to replace.



FEATURES

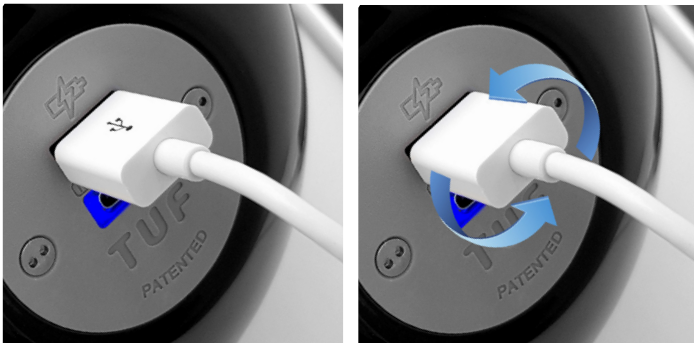
- USB A+C or USB C+C ports
- Mobile phone and tablet charging
- Patented user replaceable USB module
- TUF | PROTECT technology
- Unique, patented reversible A port

TUF-R A+C TECHNICAL

| KEY SPECIFICATIONS | TUF-R A+C (25W) |
|------------------------------|---|
| USB charging outlets | 1 x type A female (reversible) 1 x type C female (reversible) |
| Charging current | Type C: 5V/3A, 9V/2.22A, 15V/1.7A, 20V/1.2A (PD3.0) Type A: 5V/3A, 9V/2A, 12V/1.5A, (QC3.0/QC2.0) Combined (A+C) : 5V/4.0A (MAX) |
| Rated total output power | TUF-R 25W MAX |
| AC voltage range | 100-240VAC at 50/60Hz |
| AC input current (full load) | Maximum 0.6A |
| Efficiency | Up to 90% |
| Environment | 0-25°C |
| Standby power | 0.05W |

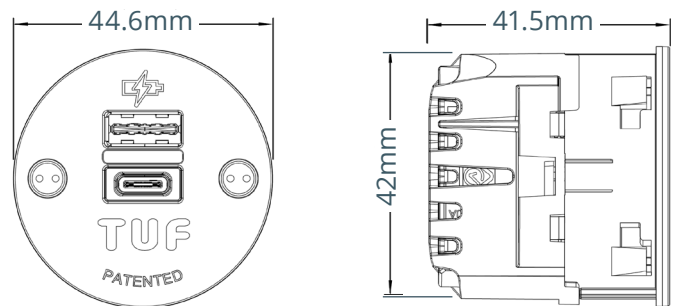
| | |
|----------------------------------|--|
| Internal over temp protection | Yes, auto reset Blue and Green LED Flash |
| Internal over voltage protection | Yes, auto reset |
| Output over current protection | Yes, self limiting Type C - Flash Green Type A - Flash Blue |
| Short circuit protection | Yes, self resetting |
| Power indicator | Blue LED Standard Voltage Green LED Higher Voltage (PD/QC) |
| USB Sockets | Gold plated for improved contact. Type A and Type C manufactured for minimum 10,000 insertions. . |
| Charge Standards | (IDR) - Intelligent Device Recognition, PD3.0; QC2/QC3 |
| Standards | Certified to IEC 62368-1 : 2014 (safety) and EN61204 : 2000 (EMC) |

TUF R is designed and intended for commercial use.



TUF-R features OE's unique reversible Type A port enabling a first time connection, every time.

TUF-R CANISTER DIMENSIONS



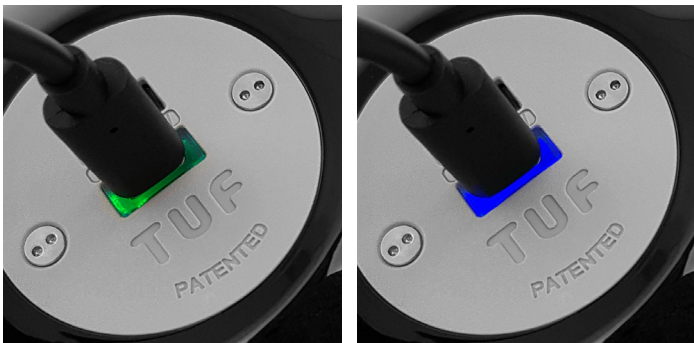
TUF-R Canister replaceable tool.
Click [HERE](#) to see how easy it is to replace TUF-R modules.

TUF-R C+C TECHNICAL

| KEY SPECIFICATIONS | TUF-R C+C (30W) |
|------------------------------|--|
| USB charging outlets | 2 x type C female (reversible) |
| Input | 100-240 V~, 50/60 Hz 1.0 A |
| Output | Type USB C1 / C2 (single output): 5 Vdc, 3 A / 9 Vdc, 2.5 A / 15 Vdc, 2A / 20Vdc, 1.5A Type USB C1 and C2 (dual output): 5 Vdc, 2 A and 5 Vdc, 2 A |
| Rated total output power | TUF-R HP CC 30W MAX |
| AC voltage range | 100-240VAC at 50/60Hz |
| AC input current (full load) | Maximum 0.6A |
| Efficiency | Up to 90% |
| Environment | 0-40°C |
| Standby power | 0.05W |

| | |
|----------------------------------|--|
| Internal over temp protection | Yes, auto reset Blue and Green LED Flash |
| Internal over voltage protection | Yes, auto reset |
| Output over current protection | Yes, self limiting Type C - Flash Green |
| Short circuit protection | Yes, self resetting |
| Power indicator | Blue LED Standard Voltage Green LED Higher Voltage (PD/QC) |
| USB Sockets | Gold plated for improved contact. Type A and Type C manufactured for minimum 10,000 insertions. . |
| Charge Standards | (IDR) - Intelligent Device Recognition, PD3.0; QC2/QC3 |
| Certifications / Standards | Certified to IEC 62368-1 : 2018, EN IEC 62368-1:2020+A11 : 2020, BS EN |

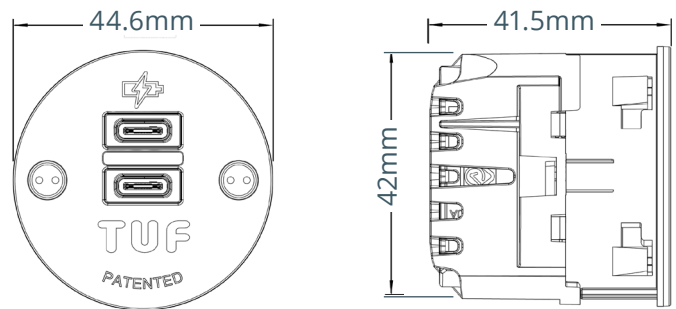
TUF R is designed and intended for commercial use.



GREEN LED = Boost,
Super Fast PD Charging

BLUE LED = Fast
Charging

TUF-R CC CANISTER DIMENSIONS



TUF-R Canister replaceable tool.
Click [HERE](#) to see how easy it is to
replace TUF-R modules.

TUF-R REPLACE



TUF-R and TUF-R HP are quick and simple to replace without the need for an electrician or turning off the power. The unique and patented benefit of being replaceable makes TUF-R perfect for areas of high usage.

[CLICK](#) to see how quick and easy TUF-R / TUF-R HP is to replace.

Upgrading or replacing the TUF-R module and not the whole product saves time, money, and significantly reduces waste.

Being replaceable also allows TUF-R to be upgraded in the future to incorporate the latest technologies.



TUF replacing tool.



Insert the 'snake eye' bit into the tool as shown.



Use the tool to unscrew the 'snake eye' screws.



Lift off the TUF fascia



Insert the second part of the TUF replacing tool into the TUF as shown, until a click is heard.



Pull the TUF cartridge out from the unit.



Unwrap and insert the new TUF cartridge, paying close attention to the orientation of the cartridge to the blue housing.



Push the cartridge into the blue housing until a click is heard.



Place the TUF fascia back into position.



Using the TUF replacing tool and 'snake eye' bit, screw the snake eye screws back into place