

TUF-PD



OE Elsafe's TUF-PD is our next generation USB fast charging module incorporating the latest Power Delivery technology and a world first reversible A connector port.

The new TUF-PD USB fast charger enables mobile devices to charge at optimum speeds, significantly faster than was previously possible. For a low battery boost a quick 10-minute charge is all that is needed to add around 20% for most newer phones.

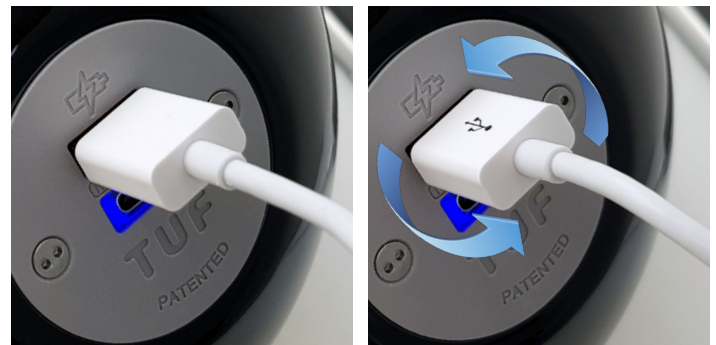
New and unique to OE Elsafe is the reversible Type A port which will ensure a quick single attempt connection, - the USB connector can now be inserted both ways.

Specifications	
USB charging outlets	1 x type A female (reversible) 1 x type C female (reversible)
Charging current	Type C 5V/3A, 9V/2.22A, 15V/1.7A, 20V/1.2A (PD3.0) Type A: 5V/3A, 9V/2A, 12V/1.5A (QC3.0/QC2.0) Combined (A+C) : 5V/4.0A (MAX)
Rated total output power	25W
AC voltage range	100-240VAC at 50/60Hz
Ac input current (full load)	Maximum 0.6A
Efficiency	Up to 90%
Environment	0-25°C
Standby power	0.05W

Features	
Internal over temp protection	Yes, self resetting Blue and Green LED Flash
Internal over voltage protection	Yes, self resetting
Output over current protection	Yes, self limiting Type C - Flash Green Type A - Flash Blue
Short circuit protection	Yes, self resetting
Power indicator	Blue LED Standard Voltage Green LED Higher Voltage (PD/QC)
USB Sockets	Gold plated for improved contact. Type A and Type C manufactured for minimum 10,000 insertions. .
Charge Standards	(IDR) - Intelligent Device Recognition, PD3.0; QC2/QC3
Standards	Certified to IEC 62368-1 : 2014 (safety) and EN61204 : 2000 (EMC)

Device charge times	10-90% charge time (minutes)
iPhone X Max	65 minutes
iPhone X	77 minutes
Samsung S9 plus	79 minutes
Samsung S10	63 minutes
Low battery boost charge	up to 20% in ten minutes for most newer mobile phones

REVERSIBLE A Type A Port = Insert USB charging connector both ways.



GREEN LED = Boost, Super Fast PD Charging
BLUE LED = Fast Charging