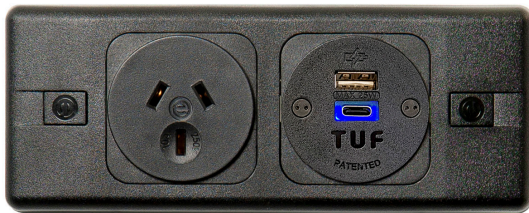


Modular panel mounted power providing flexible power, data/AV connectivity. Ideal for office screens where a limited number of outlets are required.

PUMA can be fitted into virtually any panel within a furniture range, from extruded trunking to modesty panels as well as soft furnishings and can be specified to meet particular requirements.



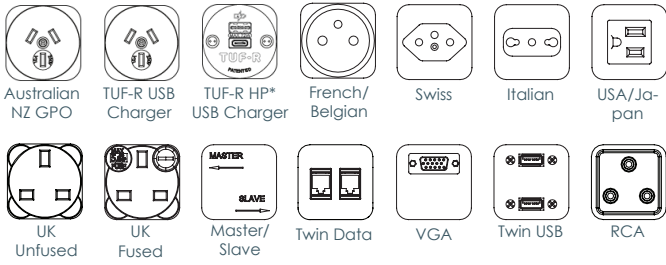
Mains power sockets are available for most countries together with a wide range of data outlets. Special units are available on request with remote switches, thermal resettable fuses, power cleaners.

Puma comes standard in grey with other colours being available subject to minimum order quantities.





## Common Modular Components\*



\*TUF-R HP must be paired with a power supply unit (PSU) and a GST08 cable.

### Testing:

100% testing - continuity, polarity, insulation & earth

### Soft Wiring (power)

Power wired to Wieland GST connectors allow starter cables to be changed to suit requirements, especially useful during moves and changes (CHURN)

Rotating cable grips mean the cable can exit via the rear or the side without the need for tools, allowing the PUMA to be mounted in a minimum cavity depth of 30mm.

## Features

### Configuration:

Power only / Data only / Combined (Power & Data/AV)

Internal segregation between Power and Data/AV in combined PUMA

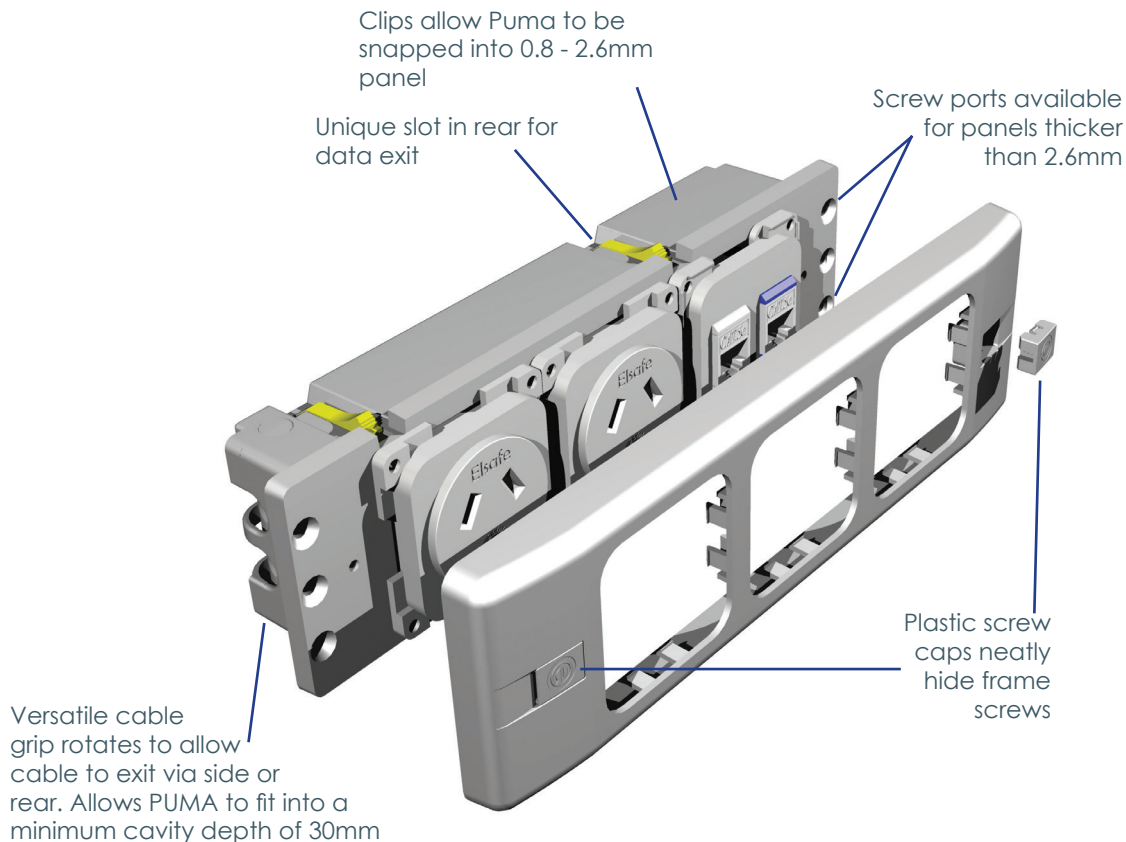
### Insulation:

Re-inforced insulation

### Soft Wired Data / AV

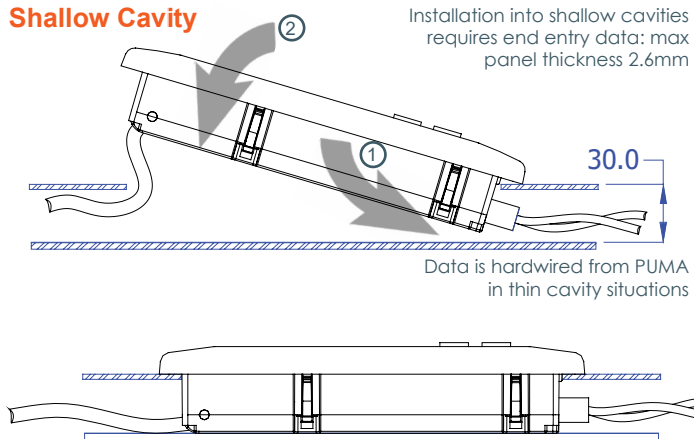
As well as soft-wired power, PUMA can be supplied with pre-fabricated (100% end-of-line tested) flyleads for data (CAT5e, CAT6, CAT7) and AV connections thereby providing a complete 'plug-and-play' soft wiring solution. If necessary, branded data can be accommodated to retain full channel warranties, please call for advice (see our Soft Wiring Data Brochure).

PUMA comes standard with an 800mm cable and Wieland GST connector to allow for easy relocation. Other entry and exit configurations are available on request.

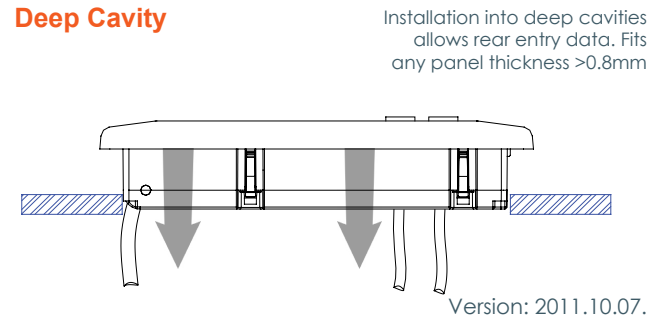


# puma INSTALLATION

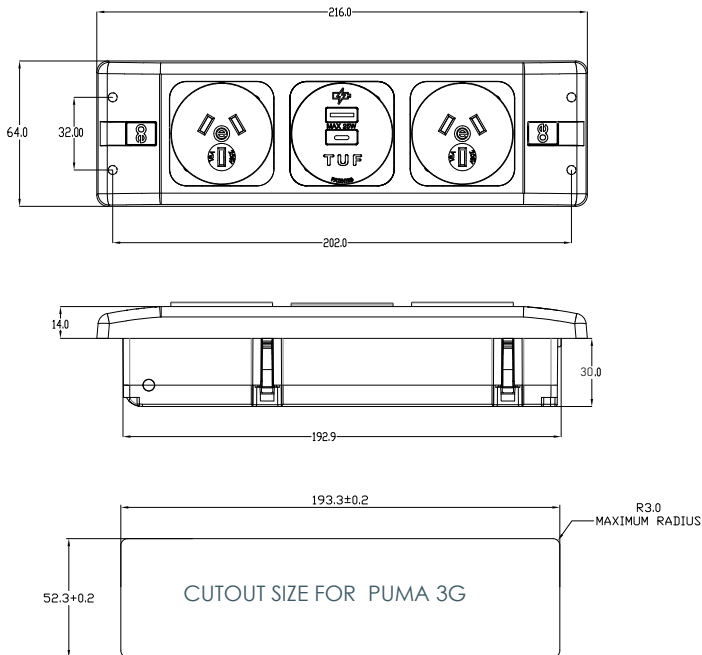
## Shallow Cavity



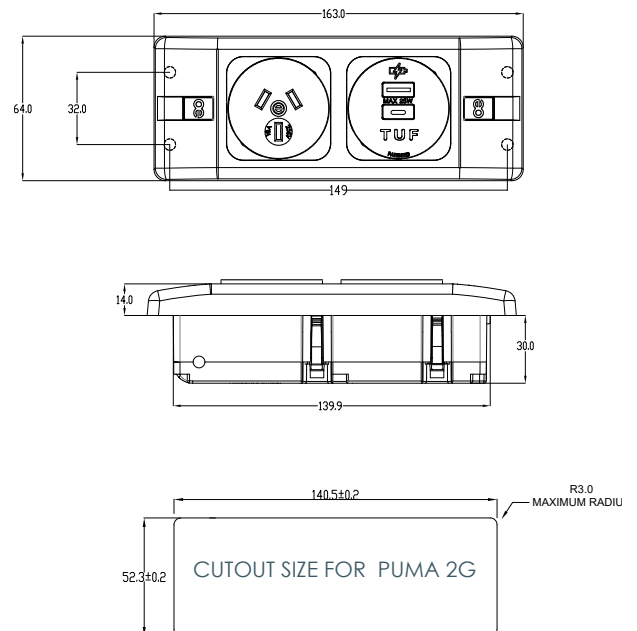
## Deep Cavity



## PUMA 3 dimensions



## PUMA 2 dimensions



# TUF-R TECHNICAL



TUF-R and TUF-R HP are quick and simple to replace without the need for an electrician or turning off the power. The unique and patented benefit of being replaceable makes TUF-R perfect for areas of high usage.

[CLICK](#) to see how quick and easy TUF-R / TUF-R HP is to replace.

Upgrading or replacing the TUF-R module and not the whole product saves time, money, and significantly reduces waste.

Being replaceable also allows TUF-R to be upgraded in the future to incorporate the latest technologies.



TUF replacing tool.



Insert the 'snake eye' bit into the tool as shown.



Use the tool to unscrew the 'snake eye' screws.



Lift off the TUF fascia



Insert the second part of the TUF replacing tool into the TUF as shown, until a click is heard.



Pull the TUF cartridge out from the unit.



Unwrap and insert the new TUF cartridge, paying close attention to the orientation of the cartridge to the blue housing.



Push the cartridge into the blue housing until a click is heard.



Place the TUF fascia back into position.



Using the TUF replacing tool and 'snake eye' bit, screw the snake eye screws back into place