

# thick panel frame



The QikFIT Thick Panel Frame has been designed to accommodate QikFIT power, data and AV modules, mounted into a screen or other surfaces from 3mm to 14mm thick.

The sleek and easy to install frame comes in white, black or grey and offers a range of configuration options to suit every workspace.

The QikFIT Thick Panel Frame is supplied complete with integrated fixing clips for quick tool-less installation into pre-cut panels without the need for fixing screws, making it a cost effective and practical solution.

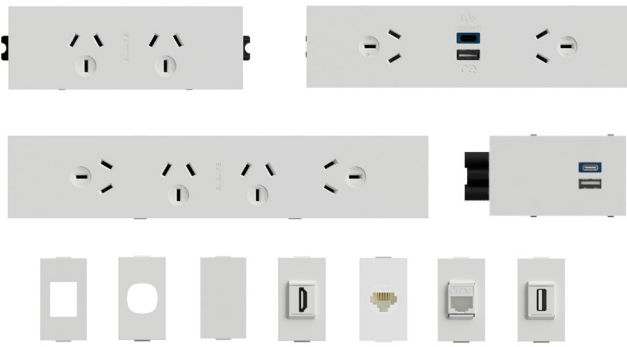


PANEL MOUNTED  
POWER DATA and AV

MOUNT INSIDE CABINERY  
FOR DISCREET POWER

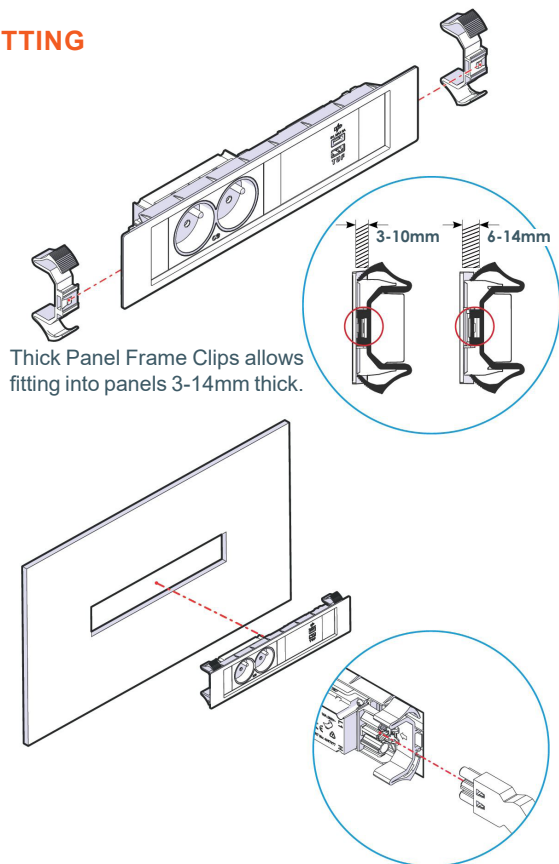
# thick panel frame TECHNICAL

## COMMON COMPONENTS



\*Wide range of data cutouts and couplers available.

## FITTING



Thick Panel Frame Clips allows fitting into panels 3-14mm thick.

## FEATURES

### Configuration:

QikFIT Thick Panel Frame can be configured with OE Elsafe QikFIT power, data and AV modules to suit the workspace.

### Construction

QikFIT Thick Panel frame is moulded from fire retardant polycarbonate.

### Technical

The Thick Panel Frame comprises of three parts:

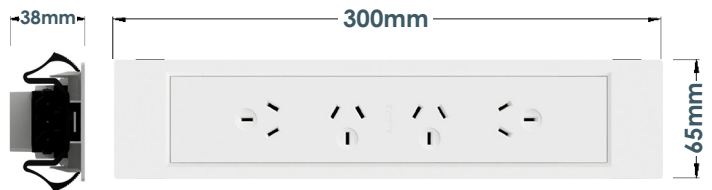
- The polycarbonate frame
- Two frame clips made from Nylon 6/6 to allow them to spring as required.

The clips are able to be adjusted for variations in panels from 3 - 10mm and panels from 6 - 14mm thick.

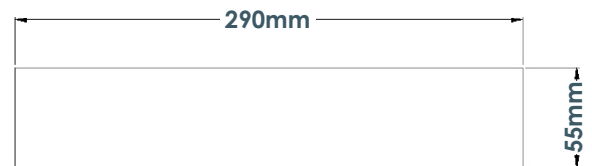
QIKFIT power, data and AV modules are designed and intended for commercial use only.

*"We test every pin in every socket in every module"*

### Overall Size:



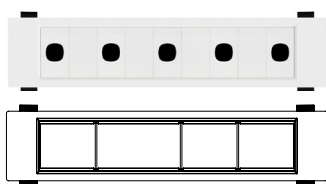
### Cut-out Size:



## Mounting of QikFIT modules in Thick Panel Frames:

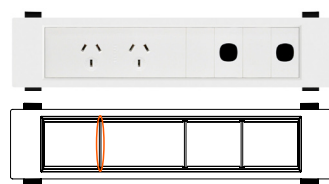
QikFIT Panel comes with three moulded posts for stability. For installation of data (up to 9 x QF5 tiles), do not remove the posts. For Power, data and AV mixed configurations, remove posts as per the guide below.

### QF5 Install (Data & AV Tiles)



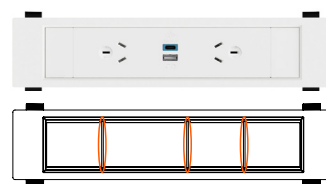
For all data / AV (up to 9), leave all posts.

### QF25 Install (QikFIT 2GPO Data/AV)



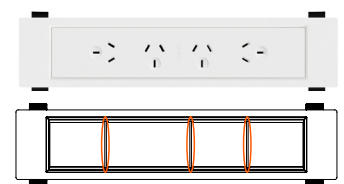
For 2GPO plus data / AV, remove 1 (left) posts.

### QF35 Install (QikFIT 2GPOTUF)



For 2GPOTUF in central mount, remove all posts

### QF45 Install (QikFIT 4GPO)



For 4GPO, remove all posts